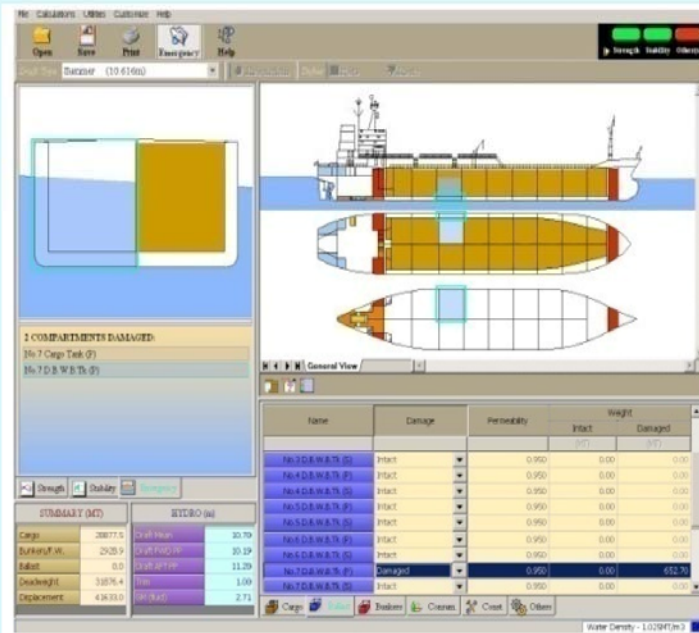


C.A.M.E.L. © v1.5.00 1997-2013

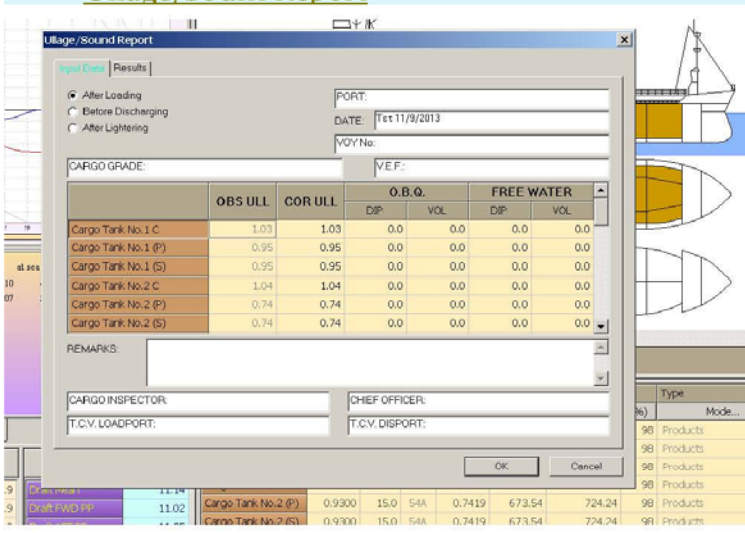
Computerized Advanced Marine Engineering Loading

TANKERS-CHEMICAL CARRIERS

One screen covers the entire program



Ullage/Sount Report



Standards functions for Tanker-Chemical

- Hydrostatic information table(Draft,trim,LCB...)
- Intact Stability information table-IMO Criteria
- Weather Criteria information table
- Longitudinal Strength calculation table(S.F., B.M)
- Summary of cargoes information table
- Forward draft limit
- Calculation of Propeller immersion
- Load Line selection(Summer,Winter,Tropical...)
- Restrictions(Draft,Trim,S.F.,B.M., Air Draft)
- Automatic unit conversion(Metric-British)
- Water density calculation
- Cover all cargo types(Product, Crude, Chemical)
- Various unit selection for density of cargo
- Actual loading graph of the vessel
- ASTM/IP Convention Tables
- Automatic correction of density according to loading/unloading temperature
- On line help and error/warning messages
- Explorer to manage loading conditions(copy, paste, recycle bin, directories...)
- Import-Export loading conditions
- Reporting facilities(Print out tables and graphs)

Optional utilities for Tanker-Chemical

- Ballast Water Management module
- Display and printout Draft Survey Report
- Auto-Trim module
- After Loading/Before Discharging calculations
- Ullage Report
- Damage Stability Calculation – Direct damage assessments
- Damage Stability Calculation- Automatic assessment for each loading condition using pre-programmed damage cases according to approved damage stability booklet
- Grounding/ Refloating calculation