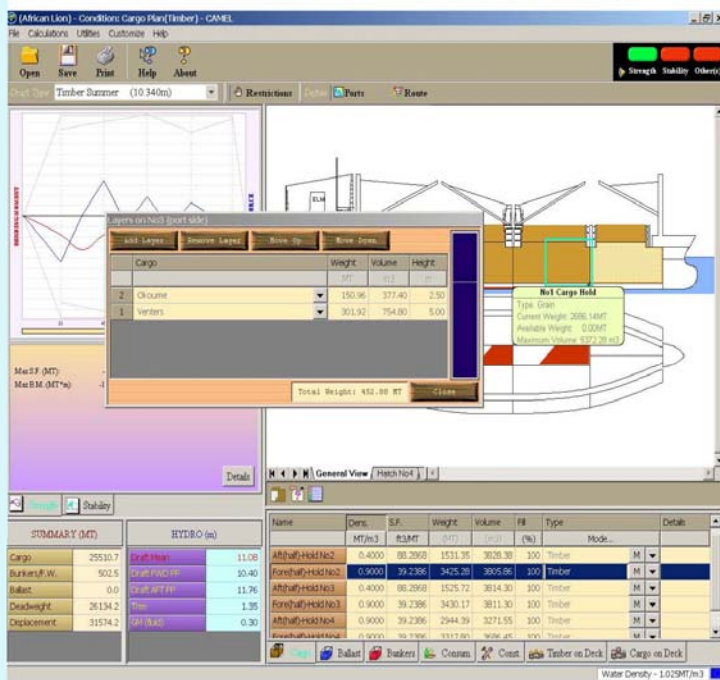


# C.A.M.E.L. © v1.5.00 1997-2013

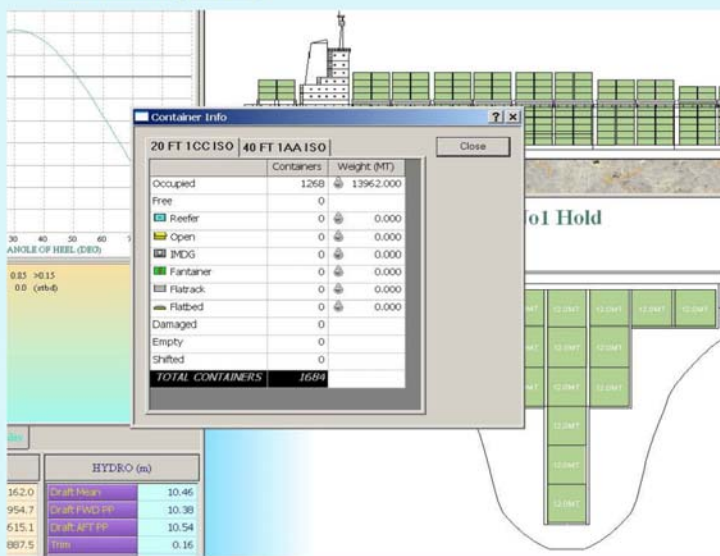
Computerized Advanced Marine Engineering Loading

## Multi-purpose

### One screen covers the entire program



### Summary view



### Standards functions for Multi purpose

- Hydrostatic information table(Draft,trim,LCB...)
- Intact Stability information table-IMO Criteria
- Weather Criteria information table
- Longitudinal Strength calculation table(S.F., B.M)
- Summary of cargoes information table
- Forward draft limit
- Calculation of Propeller immersion
- Load Line selection(Summer,Winter,Tropical...)
- Restrictions(Draft,Trim,S.F.,B.M., Air Draft)
- Automatic unit conversion(Metric-British)
- Water density calculation
- Various unit selection for density of cargo
- Actual loading graph of the vessel
- On line help and error/warning messages
- Explorer to manage loading conditions(copy,paste, recycle bin, directories....)
- Import-Export loading conditions
- Reporting facilities(Print out tables and graphs)
- Cover all types of cargo simultaneously. (Drycargo, Grain, General Cargo, Timber, Container)

### Optional utilities for Multi-purpose

- Ballast Water Management module
- Display and printout Draft Survey Report
- Auto-Trim module(for ballast-bunkers)
- Damage Stability Calculation
- Grounding/ Refloating calculation
- Timber Loading Module
- General Cargo on deck Module